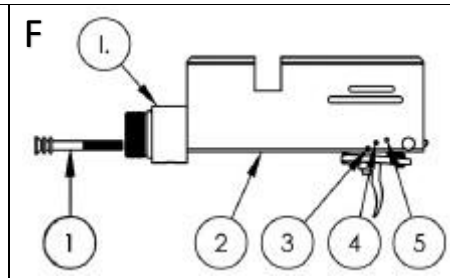
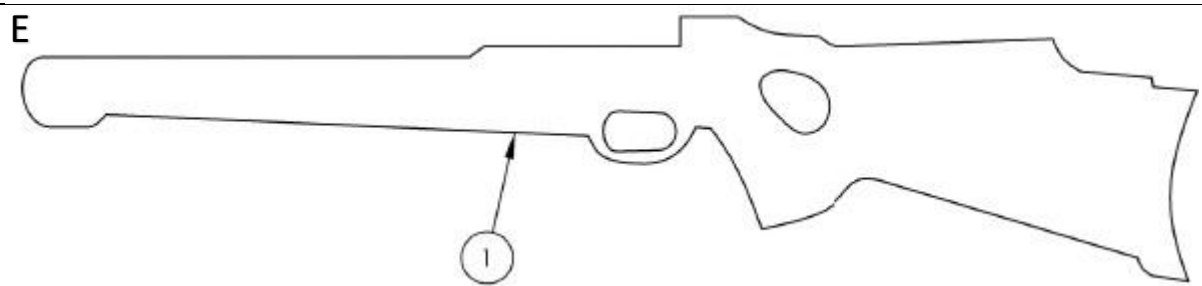
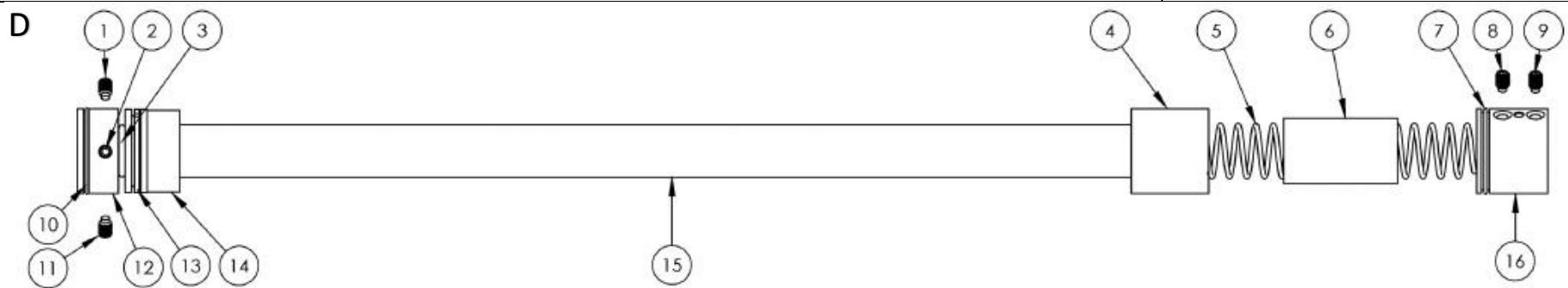
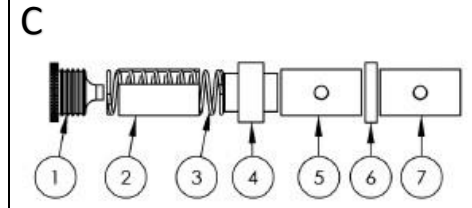
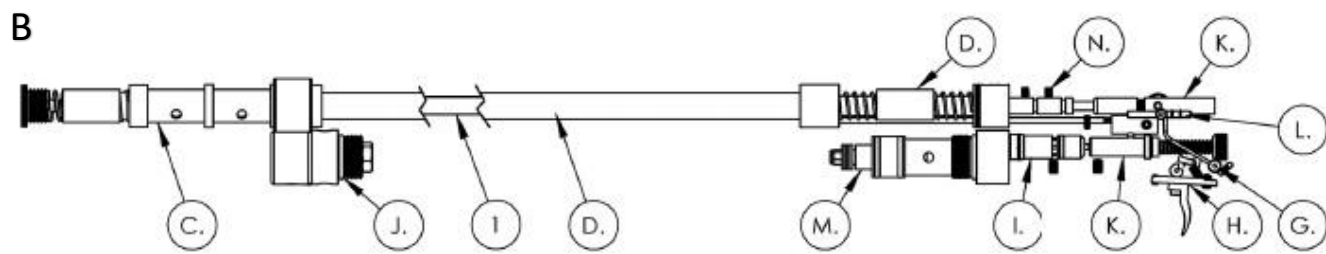
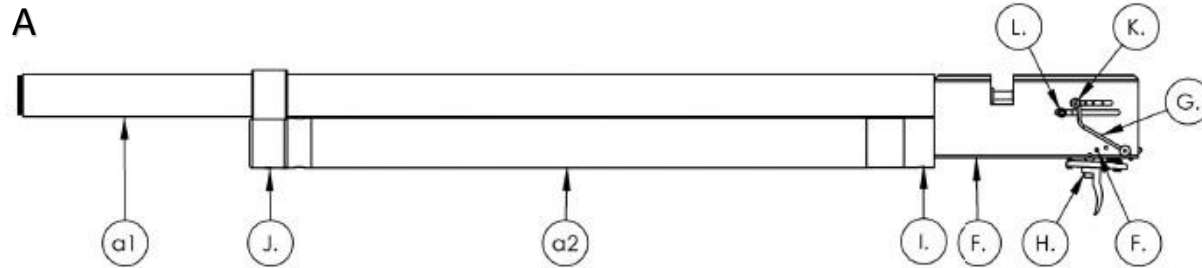
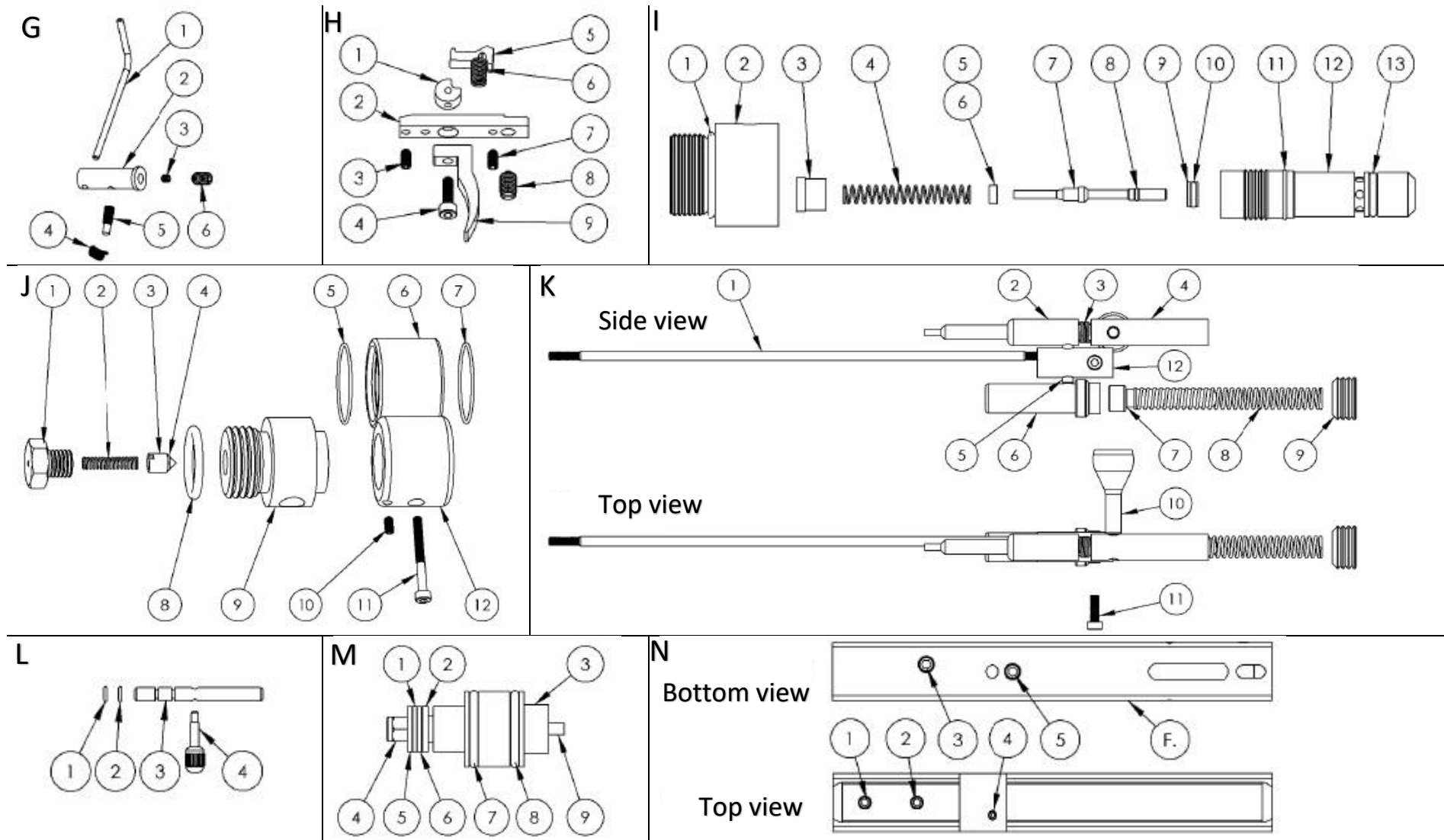


Model	Other model names	Date	Revision	Revision date
FX Monsoon		2018-06-20	EN.18.01	-



Model	Other model names	Date	Revision	Revision date
FX Monsoon		2018-06-20	EN.18.01	-



Model	Other model names	Date	Revision	Revision date
FX Monsoon		2018-06-20	EN.18.01	-

NO	ART. NO	DESCRIPTION	NO	ART. NO	DESCRIPTION	NO	ART. NO	DESCRIPTION
A1	18025	Outer tube v6	F4 - 4,5	18000	Barrel housing 4,5	J2	2524	Spring 0,5x3x20
A2 - 4,5	16017-1	Airtube 390 (drilled)	F4 - 5,5	18001	Barrel housing 5,5	J3	12011	Inlet Valve
A2 - 5,5	16017-2	Airtube 390	F5	16023	Steel pin 2x16	J4	5111	O-ring 2,5x1,5 NBR90
B1 - 4,5	2633	Barrel 4,5	F6	-	Piano wire trigger	J5	18031	O-ring 28x1 NBR70
B1 - 5,5	2629	Barrel 5,5	F7	16023	Steel pin 2x16	J6	18018	Barrel support ring
C1 - 4,5	17023	Muzzle 4,5	G1	-	Reset pin v6	J7	18031	O-ring 28x1 NBR70
C1 - 5,5	17000	Muzzle 5,5	G2	18002	Reset axle	J8	11624	O-ring 22x2,5 NBR70
C2	18023-1	Plastic Pipe Short Split	G3	12035	Screw M2,5x2,5	J9	11029	Air Cylinder End Inlet
C3	18033	Spring 1,5x16x65	G4	17018	Spring 0,2x3x15	J10	2637	Screw M4x6
C4 - 4,5	18022	Spring guide 4,5	G5	17040	Reset screw M3	J11	11506	Screw M3x30
C4 - 5,5	18021	Spring guide 5,5	G6	2637	Screw M4x6	J12	12036	Barrel support base
C5	18023-2	Plastic Pipe Short Hole	H1	11525	Trigger Wheel	K1	18035	Reloading rod
C6 - 4,5	10837	Washer Reloading 4,5	H2	17017	Trigger Base	K2 - 4,5	18006	Pellet probe 4,5
C6 - 5,5	18040	Washer Reloading 5,5	H3	2500	Screw M3x6	K2 - 5,5	18007	Pellet probe 5,5
C7	18023-2	Plastic Pipe Short Hole	H4	2527	Screw M3x10	K3	18044	Rotating spring
D1	2534	Screw M5 x 6	H5	18009	Trigger Sear	K4	18008	Bolt attachment
D2	2534	Screw M5 x 6	H6	17046	Spring 0,5x3,5x15	K5	18039	Cylindrical Pin
D3	5109	O-ring 11,6x2,4 NBR 70	H7	2500	Screw M3x6	K6	11023	Hammer
D4	18016	Brass bushing	H8	11015	Trigger adjuster 2-stage	K7 - 4,5	18029	Hammer weight 4,5
D5	18019	Spring for Reloading	H9	2020	Trigger	K7 - 5,5	18030	Hammer weight 5,5
D6	18024-2	Plastic 16 Pipe Short	I1	11624	O-ring 22x2,5 NBR70	K8	18038	Hammer spring
D7	5100	O-ring 23x1 NBR90	I2	18017	Valve offset	K9	17006	Hammer adjuster
D8	2534	Screw M5 x 6	I3 - 4,5	18011	Valve spring lid 4,5	K10	18004	Cocking bolt
D9	2534	Screw M5 x 6	I3 - 5,5	18037	Valve spring lid 5,5	K11	2527	Screw M3x10
D10	5100	O-ring 23x1 NBR90	I4	16030	Spring 0,5x5x40	K12	18005	Probe and hammer aligner
D11	2534	Screw M5 x 6	I5	2040	Valve Seal	L1	2528	O-ring 1,5x1 NBR70
D12	18013	Brass Air Bushing	I6	2041	Valve Seal Holder	L2	2528	O-ring 1,5x1 NBR70
D13	10828	Piston Ring	I7	2022	Mail valve stem	L3	18003	Safety rod
D14	18015	Reloading Piston	I8	2528	O-ring 1,5x1 NBR70	L4	2035	Short Handle
D15	18024-1	Plastic 16 Pipe Long	I9	2023	Valve Seat	M - 4,5	Separate list	Only 4,5 (regulator)
D16	18012	Steel bushing	I10	2529	O-ring 4,3x1,5 NBR70	N1,2	2501	Screw M4x6
E1	-	Stock	I11	16028	O-ring 12x1 NBR70	N3	2503	Screw M5x8
F1	5112	O-ring 5,28x1,78 NBR70	I12	18014	Main Valve Housing	N4	-	Empty Hole
F2	5112	O-ring 5,28x1,78 NBR70	I13	5104	O-ring 9,3x2,4 NBR70	N5		Stock Screw
F3	18034	Screw M6x45	J1	11017	Air tube end Inlet Nut			