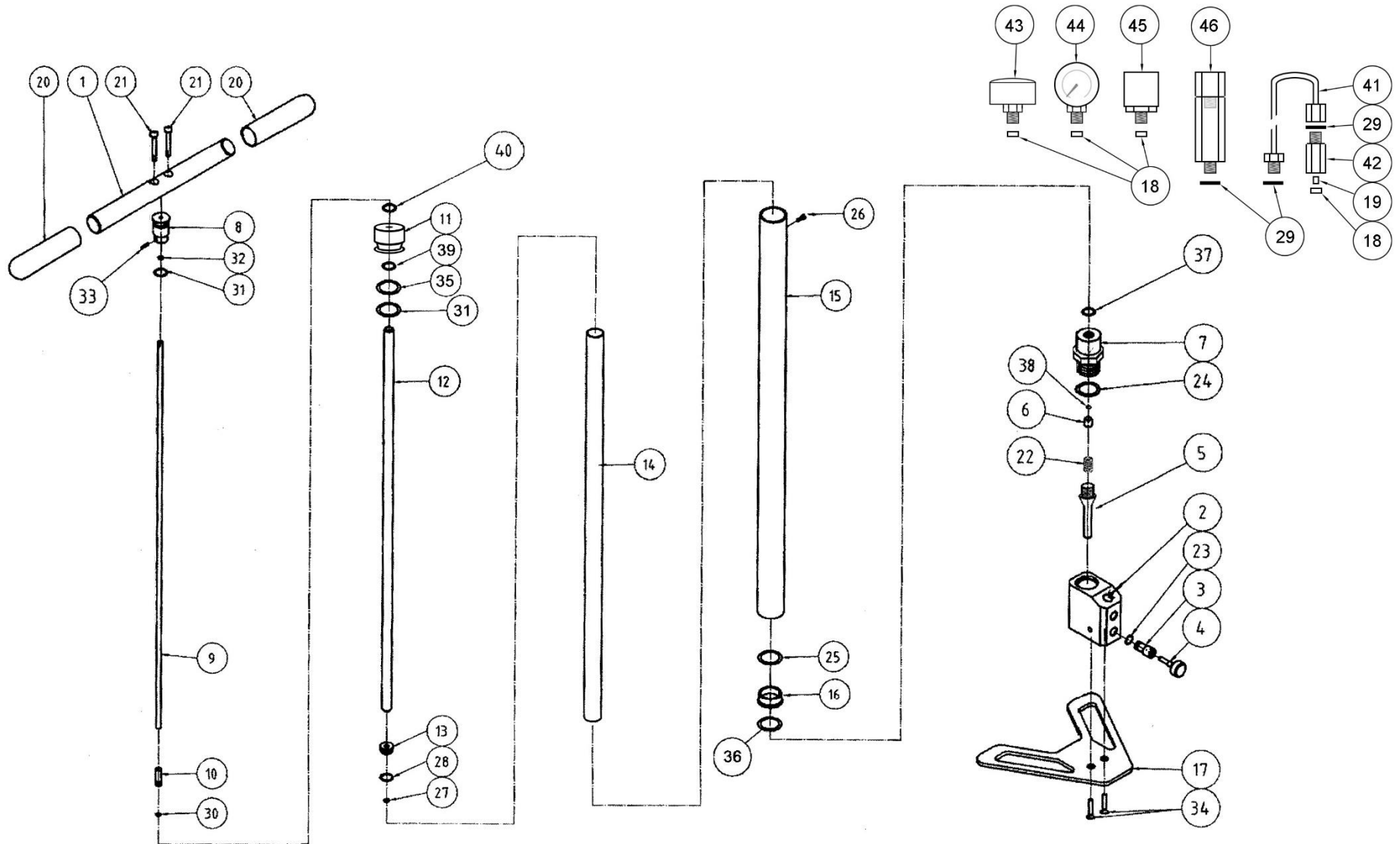


Model	Other model names	Date	Revision	Revision date
FX Handpump		2018-06-18	EN.19.01	2019-06-25



Model	Other model names	Date	Revision	Revision date
FX Handpump		2018-06-18	EN.19.01	2019-06-25

NO	ART. NO	DESCRIPTION	NO	ART. NO	DESCRIPTION
1	1010	Handle bar	30	5107	O-ring 2.9x1.78 PUR90
2	1005	Pump base	31	5101	O-ring 20x2.5 NBR70
3	5002	Valve shell	32	5110	Rubber ball 4.75 NBR70
4	5004	Valve screw	33	1501	Pivot pin 2.5m6x24
5	5009	Valve pipe	34	5203	Screw M5x10
6	5000	Main valve	35	5113	O-ring 20.24x2.62 NBR70
7	5012	Main valve housing	36	5106	O-ring 21.4x2.4 NBR70
8	1008	Inlet valve housing	37	5105	O-ring 9.3x2.4 NBR90
9	1009	Bar 5mm	38	5111	O-ring 2.5x1.5 NBR90
10	1004	High pressure piston	39	1504	O-ring 4.42x2.62 NBR70
11	1003	Large piston	40	5112	O-ring 5.28x1.78 NBR70
12	1001	Hydraulic pipe 10mm	41	5403	Kevlar hose 0.5m
13	5001	Brass cap	42	5008	Filter housing
14	1002	Inner tube 22mm	43	5401	Pressure gauge W
15	1012	Outer tube 28mm	44	5400	Pressure gauge G
16	1000	Threaded brass cap	45	5007	Adapter
17	1011	Footplate	46	0150	External moisture trap
18	5003	Plastic washer 4mm			
19	1014	Filter			
20	1503	Handle			
21	1017	Screw M5x25			
22	5204	Spring 0.5x3x15			
23	5005	Plastic washer 2mm			
24	5103	O-ring 18x2.5 NBR90, <i>until September 2017</i>			
24	5115	O-ring 17,2 x 3,0 NBR 70, <i>Block marked V2</i>			
25	5100	O-ring 23x1 NBR90			
26	5200	Screw M4x6 round			
27	5104	O-ring 9.3x2.4 NBR70			
28	5109	O-ring 11.6x2.4 NBR70			
29	1511	Rubber/steel washer			