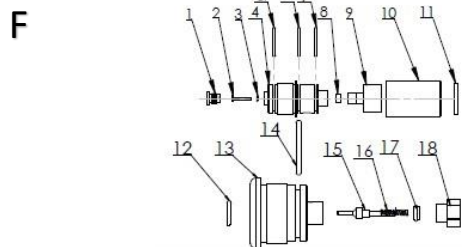
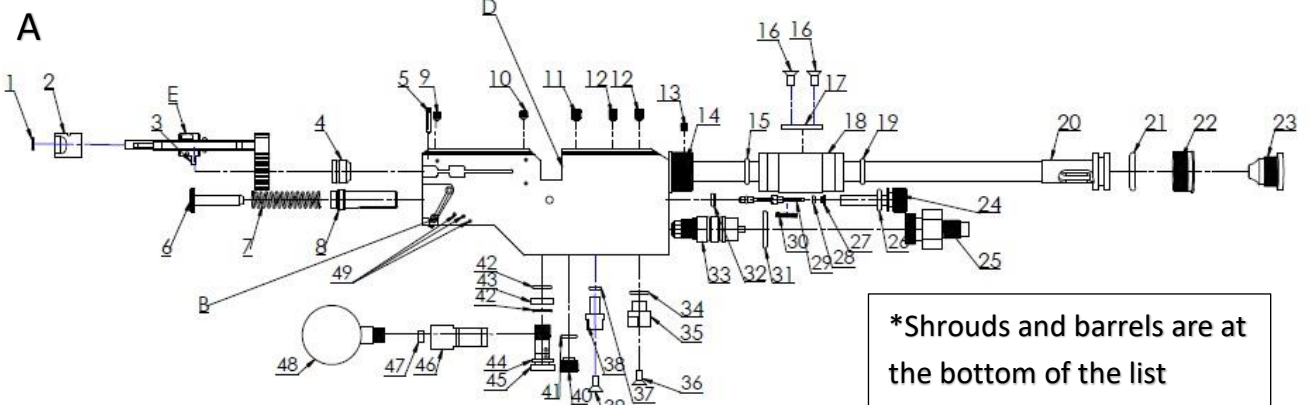
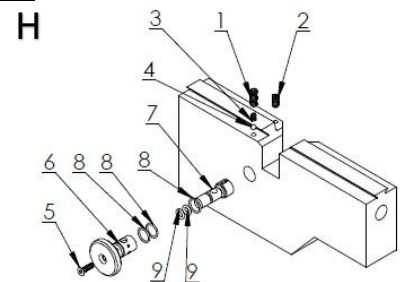
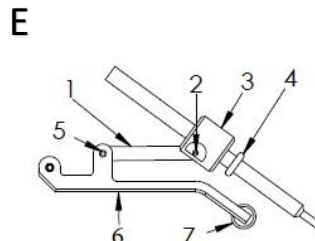
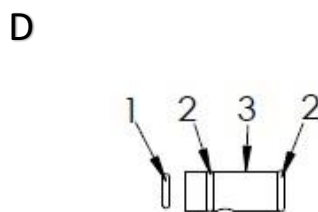
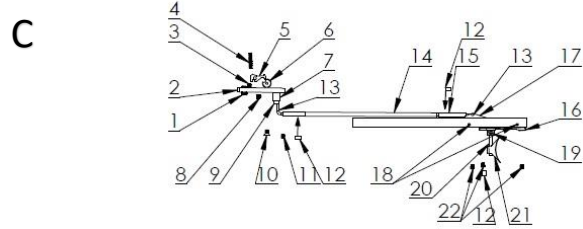
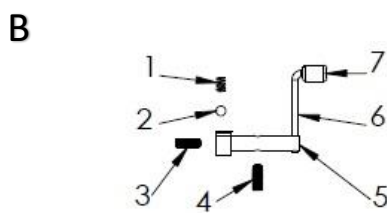
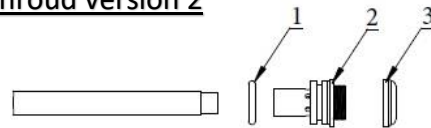


Model	Other model names	Date	Revision	Revision date
FX Bobcat MkII		2019-07-29	EN.19.01	-



**Shroud version 2**



Model	Other model names	Date	Revision	Revision date
FX Bobcat MkII		2019-07-29	EN.19.01	-

NO	ART.NO	DESCRIPTION	NO	ART. NO	DESCRIPTION
1	19138	Cheekpiece	A29	7015	Valvepin Complete
2	19317	Rail bobcat 5 hole	A29	7019	Shp Valvepin Complete
3	19320	Bobcat stock	A29	7019	.30 Valvepin Complete
4			A30	2525	Spring 0,6x4x15
5			A31	19056	Connector M20x1 v7
6	16051	Recoilpad	A32	7044	Complete Valveseat
A1	5112	O-ring 5,28x1,78 NBR 70	A32	19060	Complete SHP Valveseat
A2	19029	Pelletprobeguide rear	A32	19217	Complete .30 Valveseat
A3	11509	CPK 3h6x10	A33	19043	Regulator
A4 – 4,5	19013	Black plastic bushing 4,5			
A4 - 5,5	19012	Black plastic bushing 5,5	A34	19327	O-ring 10,1x1,6 NBR70
A4 – 6,35	19101	Black plastic bushing 6,35	A35	19302	Attachment 1/8" to M5
A4 – 7,62	19211	Black plastic bushing 7,62	A36	5203	Coutnersunk M5x10
A5	19034	M3 special screw v7	A37	5112	O-ring 5,28x1,78 NBR70
A6	11541	Hammerspring adjuster HP	A38	19121	Stock attachment M6
A6	11030	Hammerspring adjuster	A39	5203	Coutnersink M5x10
A7	11500	Hammerspring	A40	19330	Plug M12
A8 - 6,35-5,5	11540	Hammer weight v7	A41	4528	O-ring 7,66x1,78 NBR 70
A8 -7,62	17003	Hammer weight v4	A42	19327	O-ring 10,1x1,6 NBR70
A8	19039	Hammer v7	A43	19230	Sealing washer Bobcat
A9	5203	Countersunk screw M5x10	A44	1511	Rubbersteel washer 1/8"
A10	2534	Grubscrew M5x6 with tip	A45	19052	Banjobolt bc
A11	19086	Grubscrew M6x8	A46	19051	Banjo 1/8"
A11 – 7,62	19224	Grubscrew M8x8	A47	5003	Plastic washer 4mm
A12	2503	Grubscrew M5x8	A48	19347	Manometer Bc 250Bar
A12 -7,62	19086	Grubscrew M6x8	A49	19040	Cpk 2m6x24
A13	11201	Grub Screw M5x4			
A14	19314	Shroud mount rear bullpup			
A15	12045	O-ring 13,95x2,62 NBR70			
A16	19025	Countersink M5x8	B1	11503	Spring 0,5x2,5x4,4
A17	19014	Reilmounts v7	B2	11527	Steelball 3,175
A18	19316	Barrelsupport	B3	11633	Grubscrew M2,5x8
A19	12045	O-ring 13,95x2,62 NBR70	B4	11508	Grubscrew M3x8
A20	19028	Compensator Caliber Specific	B5	11027	Safety axis
A21	19098	O-ring 18,0x4,0 NBR70	B6	11625	Safety pin
A22	18010	Muzzle thread insert	B7	11200	Safety knob
A23 – 4,5	17023	Muzzle 4,5	C1	11062	Trigger adjuster
A23 – 5,5	17000	Muzzle 5,5	C2	11524	Trigger base
A23 – 6,35	19112	Muzzle 6,35	C3	2500	Grubscrew M3x6
A23 – 7,62	19212	Muzzle 7,62	C4	11504-2	Spring 0,4x2,5x15
		Shroud version 2.	C5	11031	Trigger sear
1	5113	O-ring 20,24 x 2,62 NBR 70	C6	11525	Trigger roll
2 – 4,5 5,5	19122	Muzzle mkII	C7	19315	Triggerblock reciever side
2 – 6,35	19122	Muzzle mkII 6,35	C8	16092	Grubscrew M3x4
2 – 7,62	19122	Muzzle mkII 7,62	C9	2532	Screw M3x12
3	19128	Thread protection	C10	13039	Countersunk M3x8
A24	19009	Valve supporter M16	C11	2500	Grubscrew M3x6
A25	19056	Connector M20x1 v7	C12	16100	Magnet 3x5mm
A26	5105	O-ring 9,3x2,4 NBR90	C13	19305	Ballpin
A27	19038	Spring seat v7	C14	19312	Triggerextensin rod M3
A28	5111	O-ring 2,5x1,5 NBR90	C15	19307	Trigger adjustment m3

Model	Other model names	Date	Revision	Revision date
FX Bobcat MkII		2019-07-29	EN.19.01	-

C16	19167	Match trigger base	H1		Grubscrew M4x12
C17	19303	Trigger connection	H2	12033	Grubscrew 4x8 with flat tip
C18	19040	CPK 2m6x24	H3		Spring 0,5x2,5x6,1
C19	19178	Screw M2x4	H4	4066	Steelball 3mm
C20	19137	Trigger shoe pin	H5	2508	FS 3x10
C21	19136	Adjustable Trigger shoe	H6	16083	Outer Speed knob v7
C22	16092	Grubscrew M3x4	H7	16082	Inner speed knob v8
D1 - 4,5	2529	O-ring 4,3x1,5 NBR70	H8	19108	O-ring 8x1 NBR90
D1 - 5,5	11650	O-ring 5,28x1,78 PUR70	H9	19109	O-ring 4x1,5 NBR70
D1 - 6,35	4526	O-ring 6,35x1,27 NBR70			Tubes
D1 - 7,62	19209	O-ring 7,5x1,5 NBR70	4,5-5,5	7071	Tube 40x391
D2	5112	O-ring 5,28x1,78 NBR70	6,35-7,62	19339	Tube 40x571
D2 - 7,62	19210	O-ring 11,0x1,5 NBR70			Barrels
D3 - 4,5	2057	Barrel inlet .177	4,5	12030	Barrel .177 14 - 485mm
D3 - 5,5	2056	Barrel inlet .22	5,5	12006	Barrel .22 14 - 485mm
D3 - 6,35	19104	Barrel inlet .25	6,35	19106	Barrel .25 14 - 600mm
D3 - 7,62	19207	Barrel inlet .30	7,62	19206	Barrel .30 14 - 600mm
E1	19021	Sidelever linkage v7			Shrouds Sweden
E2	19042	CPK 2m6x8	4,5 & 5,5	19099	345mm Shroud
E3 - 4,5	19011	Pelletprobe 4,5 v7	6,35	19142	449mm Shroud
E3 - 5,5	19010	Pelletprobe 5,5 v7			Shrouds export
E3 - 6,35	19192	Pelletprobe 6,35 v7	4,5 & 5,5	19129	247mm Shroud
E3 - 7,62	19200	Pelletprobe 7,62	6,35 & 7,62	193285	365mm Shroud
E4 - 4,5	19171	O-ring 4x2 NBR70			
E4 - 5,5	19332	O-ring 5x2 NBR70			
E4 - 6,35		O-ring 6,0x2 NBR70			
E4 - 7,62		O-ring 7,5x2,0 NBR70			
E5	19026	CPK 2,5M6x6			
E6	19020	Sidelever v7			
E7	19037	Sidelever handle			
F1	19035	Plugg 1/8" v7			
F2	19329	Back valve "gold"			
F3	5111	O-ring 2,5x1,5 NBR 90			
F4	19309	Tube end mano 40mm			
F5	19195	O-ring 28x3 NBR 90			
F6	19196	O-ring 30x2 NBR 70			
F7	19196	O-ring 30x2 NBR 70			
F8	5005	Plastic washer 2mm			
F9	11505	Manometer 25mm			
F10	19344	Dustcover 40mm			
F11	19382	Delrin bushing dust cover			
F12	5105	O-ring 9,3x2,4 NBR 90			
F13	19335	Tube end 40mm			
F14	19195	O-ring 28x3 NBR 90			
F15	7035	Valvepin complete v2			
F16	2525	Spring 0,6x4x15			
F17	7044	Valveseat complete			
F18	11013	Valvepin nut			