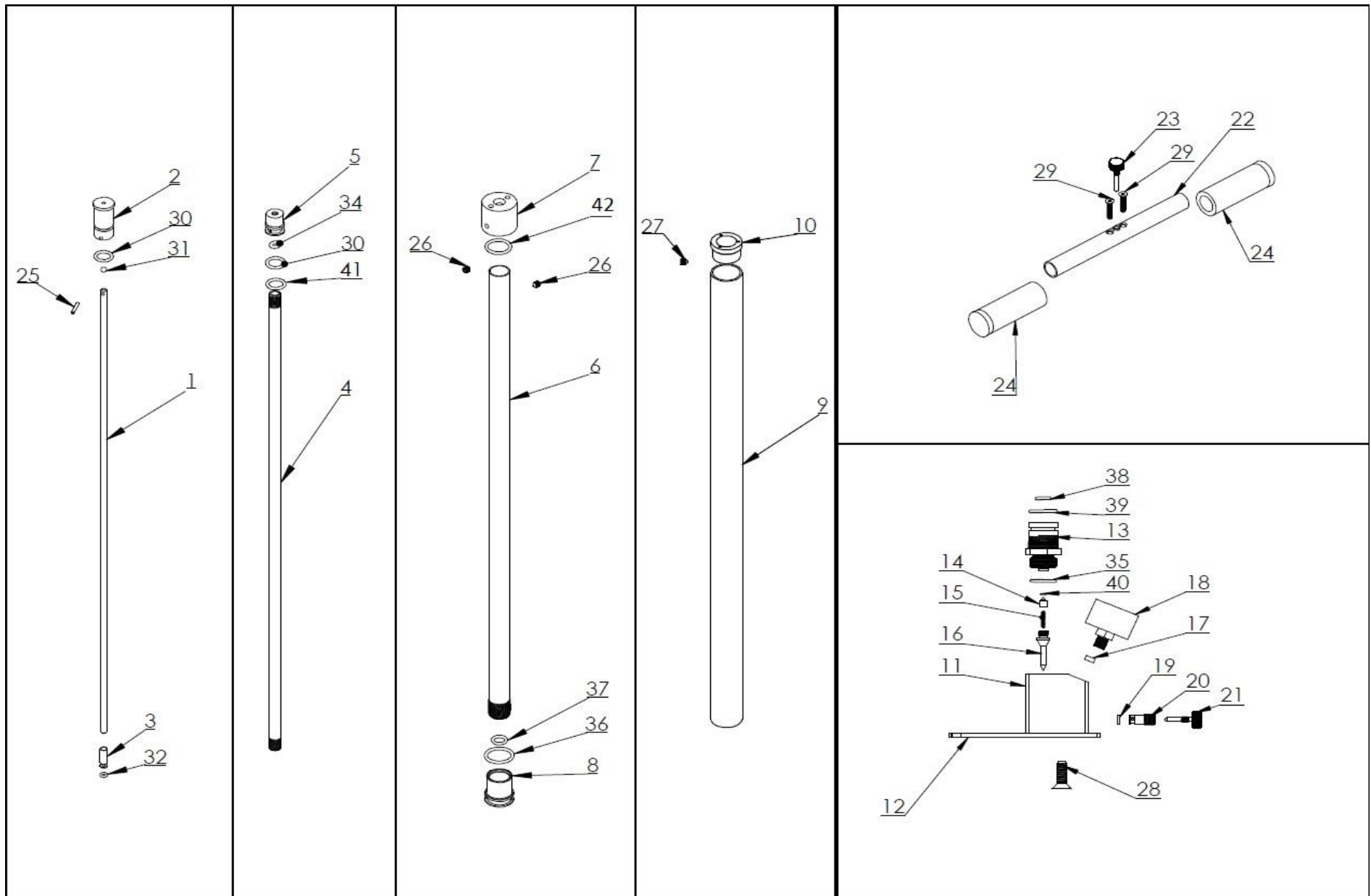


Model	Other model names	Date	Revision	Revision date
FX Handpump, 4stage Turbo edition		2018-06-19	EN.19.02	2019-10-08



Model	Other model names	Date	Revision	Revision date
FX Handpump, 4stage Turbo edition		2018-06-19	EN.19.02	2019-10-08

NO	ART. NO	DESCRIPTION	NO	ART. NO	DESCRIPTION
1	1009	Rod 5mm	29	1017	Countersink M5x25
2	3002	Inlet valve head	30	5109	O-ring 11,6 x 2,4 NBR70
3	1004	High pressure piston	31	5110	Rubber ball 4,75
4	1001	Tube 10mm	32	5107	O-ring 2,9 x 1,78 PUR90
5	3006	Middle piston			
6	3009	Tube 18mm	34	1504	O-ring 4,42 x 2,62 NBR70
7	3000	Handlemount	35	5103	O-ring 18,0 x 2,5 NBR90, until September 2017
8	3004	Big piston	35	5115	O-ring 17,2 x 3,0 NBR 70, Block marked V2
9	1012	Tube 28mm	36	5113	O-ring 20,24 x 2,62 NBR 70
10	3003	Plastic bushing	37	5104	O-ring 9,3 x 2,4 NBR70
11	1005	Pump base	38	5105	O-ring 9,3 x 2,4 NBR90
12	1011	Footplate	39	5101	O-ring 20,0 x 2,5 NBR70
13	3005	Main valve housing	40	5111	O-ring 2,5 x 1,5 NBR90
	3013	Main valve housing complete with o-rings and internal parts	41	16028	O-ring 12,0 x 1,0 NBR 70 (free floating)
14	5000	Main valve	42	5103	O-ring 18,0 x 2,5 NBR90 (free floating)
	7049	Main valve completewith o-ring			
15	5204	Spring 0,5x3x15			
16	5009	Valve pipe (in moisture trap)			
17	5003	Plastic washer / seal - 4mm thick			
18	5401	Manometer Rear Connection 1/8"			
	5400	Manometer Side/Bottom Connection 1/8"			
19	5005	Plastic washer / seal - 2mm thick			
20	5002	Valve shell			
21	5004	Valve screw (ventilation – moisture release)			
22	3008	Handle bar			
23	3001	Valve screw (gear selector)			
24	1503	Handles			
25	3010	Cylindric pin 2,5x16			
26	2534	Grubscrew M5x6			
27	3007	Grubscrew M4x4			
28	5203	Countersink M5x10			