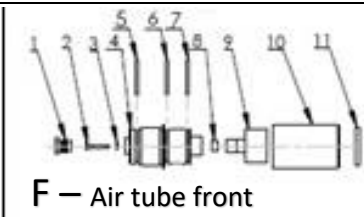
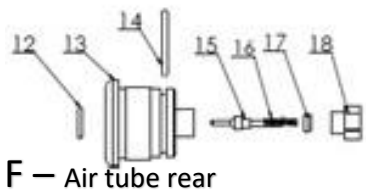
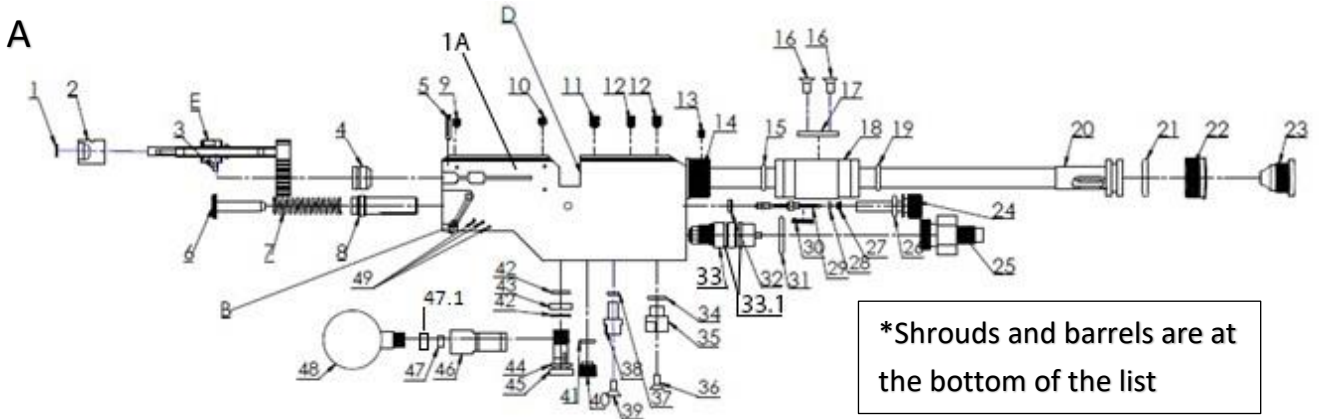
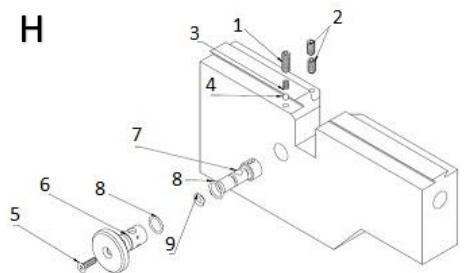
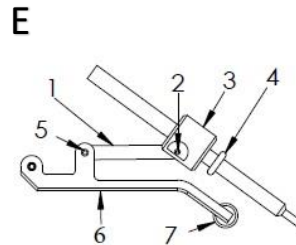
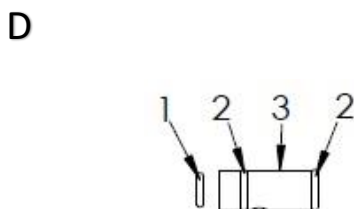
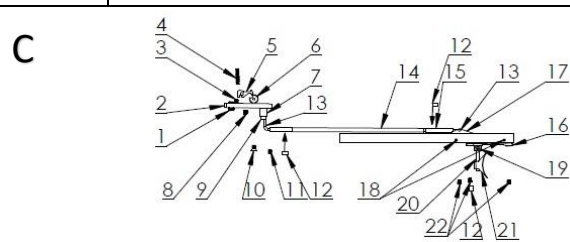
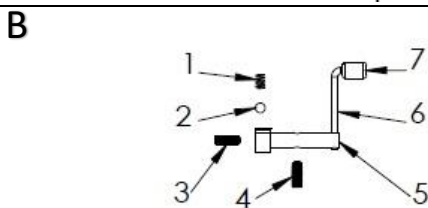
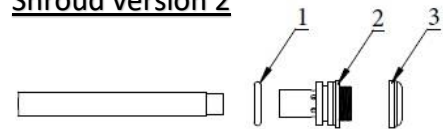


| Model | Other model names | Date | Revision | Revision date |
|----------------|-------------------|------------|----------|---------------|
| FX Bobcat MkII | | 2019-07-29 | EN.21.01 | 2021-04-26 |



Shroud version 2



| Model | Other model names | Date | Revision | Revision date |
|----------------|-------------------|------------|----------|---------------|
| FX Bobcat MkII | | 2019-07-29 | EN.21.01 | 2021-04-26 |

| NO | ART.NO | DESCRIPTION | NO | ART. NO | DESCRIPTION |
|---------------|----------|----------------------------------|-------|---------|--|
| 1 | 19336 | Cheek piece Bobcat | A28 | 5111 | O-ring 2,5x1,5 NBR90 |
| 2 | 19317 | Rail bobcat 5 hole | A29 | 7015 | Valve pin V7 complete |
| 2.1 | 4509 | Socket head cap screw M5x20 | A29 | 7019 | Valve pin SHP - Complete |
| | | | A29 | 7019 | Valve pin SHP - Complete |
| 3 | 19320 | Bobcat stock | A30 | 2525 | Spring 0,6x4x15 |
| 6 | 16051 | Adjustable recoil pad | A31 | 12046 | O-ring 15,88x2,62 NBR90 |
| A 1A | .177-.25 | Main Block Independence | A32 | 7044 | Complete Valveseat |
| A 1A | .30 | Barrel housing V13 .30 | A32 | 19060 | Complete SHP Valveseat |
| A1 | 5112 | O-ring 5,28x1,78 NBR 70 | A32 | 19217 | Valve seat Cal.30 Complete |
| A2 | 19029 | Rear pellet probe guide | A33 | - | See "Regulator pressure chart" schematic |
| A3 | 11509 | CPK 3h6x10 | A33.1 | 5109 | O-ring 11,6 x 2,4 NBR 70 |
| A4 - 4,5 | 19013 | Black plastic bushing | A34 | 19327 | O-ring 10,1x1,6 NBR70 |
| A4 - 5,5 | 19012 | Black plastic bushing | A35 | 19302 | Attachment 1/8" to M5 |
| A4 - 6,35 | 19101 | Black plastic bushing | A36 | 5203 | Countersunk M5x10 |
| A4 - 7,62 | 19211 | Black plastic bushing | A37 | 5112 | O-ring 5,28x1,78 NBR70 |
| A5 | 19034 | M3 special screw v7 | A38 | 19121 | Stock attachment |
| A6 | 11541 | Hammer spring adjuster | A39 | 5203 | Countersink M5x10 |
| A6 | 11030 | Hammer spring Adjuster M16x1x2,5 | A40 | 19330 | Plug |
| A7 | 11500 | Hammer spring | A41 | 4528 | O-ring 7,66x1,78 NBR 70 |
| A8 - 6,35-5,5 | 11540 | Hammer weight | A42 | 19327 | O-ring 10,1x1,6 NBR70 |
| A8 -7,62 | 17003 | Hammer weight v4 | A43 | 19230 | Washer seal guide |
| A8 | 19039 | Hammer v7 | A44 | 1511 | Rubbersteel washer 1/8" |
| A9 | 5203 | Countersunk screw M5x10 | A45 | 19052 | Gauge mount Bolt v8 |
| A10 | 2534 | Conical grub screw M5x6 with tip | A46 | 19051 | Gauge mount |
| A11 | 19086 | Conical grub screw M6x8 | A47 | 5003 | Plastic Washer 4mm 1/8" |
| A11 - 7,62 | 19224 | Conical grub screw M8x8 | A47.1 | 5010 | Plastic washer 8.5x2.6x1.0 |
| A12 | 2503 | Conical grub screw M5x8 | A48 | 19347 | Pressure gauge Bobcat 250bar |
| A12 -7,62 | 19086 | Conical grub screw M6x8 | A49 | 19040 | Cylindrical pin 2m6x23,5 |
| A13 | 11201 | Conical grub screw M5x4 | | | |
| A14 | 19314 | Rear shroud mount bullpup | | | |
| A15 | 12045 | O-ring 13,95x2,62 NBR70 | | | |
| A16 | 19025 | Countersunk screw M5x8 | B1 | 11503 | Spring 0,5x2,5x4,4 |
| A17 | 19014 | Dovetail plate | B2 | 11527 | Steelball 3,175 |
| A18 | 19316 | Barrelsupport | B3 | 11633 | Grubscrew M2,5x8 |
| A19 | 12045 | O-ring 13,95x2,62 NBR70 | B4 | 11508 | Grubscrew M3x8 |
| A20 | 19028 | Shroud compensator 4,5-5,5 | B5 | 11027 | Safety pivot |
| A21 | 19098 | O-ring 18,0x4,0 NBR70 | B6 | 11625 | Safety lever 27,5mm Cyclone, Cutlas, Rancho. |
| A22 | 18010 | Muzzle thread insert | B7 | 11200 | Safety knob |
| A23 - 4,5 | 17023 | Muzzle | C1 | 11062 | Adj screw second stage, soft |
| A23 - 5,5 | 17000 | Muzzle | C2 | 11524 | Trigger base |
| A23 - 6,35 | 19112 | Muzzle | C3 | 2500 | Grubscrew M3x6 |
| A23 - 7,62 | 19212 | Muzzle | C4 | 11504-2 | Spring 0,4x2,5x15 |
| | | Shroud version 2. | C5 | 11031 | Trigger Sear |
| 1 | 5113 | O-ring 20,24 x 2,62 NBR 70 | C6 | 11525 | Trigger roll |
| 2 - 4,5 5,5 | 19122 | Muzzle mkII | C7 | 19315 | Trigger block receiver side |
| 2 - 6,35 | 19124 | Muzzle MkII 6,35 | C8 | 16092 | Grubscrew M3x4 |
| 2 - 7,62 | 19125 | Muzzle mkII 7,62 | C9 | 2532 | Socket head cap screw M3x12 |
| 3 | 19128 | Thread cover M20 | C10 | 13039 | Countersunk M3x8 |
| A24 | 19009 | Guide M16 | C11 | 2500 | Grubscrew M3x6 |
| A25 | 19056 | Connector M20x1 v7 | C12 | 16100 | Magnet 3x5mm |
| A26 | 5105 | O-ring 9,3x2,4 NBR90 | C13 | 19305 | Ballpin |
| A27 | 19038 | Spring seat v7 | | | |

| Model | Other model names | Date | Revision | Revision date |
|----------------|-------------------|------------|----------|---------------|
| FX Bobcat MkII | | 2019-07-29 | EN.20.04 | 2020-03-30 |

| | | | | | |
|-----------|-------|---------------------------|-----------------------|-------|--------------------------------------|
| C14 | 19312 | Triggerextensin rod M3 | H1 | 2502 | Grubscrew M4x12 |
| C15 | 19307 | Trigger adjustment m3 | H2 | 12033 | Grubscrew 4x8 with flat tip |
| C16 | 19167 | Match trigger rail | H3 | 11501 | Spring 0,5x2,5x6,1 |
| C17 | 19303 | Trigger connection | H4 | 4066 | Steelball 3mm |
| C18 | 19040 | Cylindrical pin 2m6x23,5 | H5 | 2508 | Countersunk screw M3x10 |
| C19 | 19178 | Screw M2x4 | H6 | 16083 | Power wheel |
| C20 | 19137 | Trigger pin | H7 | 16082 | Inner axel 4,5mm for power wheel |
| C21 | 19136 | Adjustable Trigger shoe | H8 | 19117 | O-ring 8x1 NBR70 |
| C22 | 16092 | Grubscrew M3x4 | H9 | 19109 | O-ring 4x1,5 NBR70 |
| D1 – 4,5 | 2529 | O-ring 4,3x1,5 NBR70 | | | |
| D1 – 5,5 | 5108 | O-ring 5,28x1,78 | | | AirTubes |
| D1 – 6,35 | 4526 | O-ring 6,4x1,3 NBR 70 | 4,5-5,5 | 19308 | Tube Bobcat |
| D1 - 7,62 | 19209 | O-ring 7,5x1,5 NBR70 | 4,5-5,5 | 7071 | Air tube Bobcat MKII 300cc, Complete |
| D2 | 5112 | O-ring 5,28x1,78 NBR70 | 6,35-7,62 | 19339 | Air tube Bobcat/R300 |
| D2– 7,62 | 19210 | O-ring 11,0x1,5 NBR70 | 6,35-7,62 | 7072 | Air tube Bobcat MKII 470cc, Complete |
| D3 – 4,5 | 2057 | Barrel brass inlet .177 | | | |
| D3 – 5,5 | 2056 | Barrel brass inlet.22 | Barrels | | |
| D3 - 6,35 | 19104 | Barrel brass inlet.25 | 4,5 | 12030 | Barrel .177 14 – 485mm |
| D3 - 7,62 | 19207 | Barrel brass inlet.30 | 5,5 | 12006 | Barrel 55-14-485 |
| E1 | 19021 | Side lever linkage | 6,35 | 19106 | Barrel 6,35-14-600 |
| E2 | 19042 | Cylindrical pin 2mx6x8 | 7,62 | 19206 | Barrel 7,62-14-600 |
| E3 - 4,5 | 19011 | Pellet probe 4,5 | | | |
| E3 – 5,5 | 19010 | Pellet probe 5,5 | Shrouds Sweden | | |
| E3 – 6,35 | 19192 | Pellet probe 6,35 | 4,5 & 5,5 | 19099 | Shroud 345mm R5 |
| E3 – 7,62 | 19200 | Pellet probe 7,62 | 6,35 | 19142 | Shroud 447mm Extreme |
| E4 – 4,5 | 19171 | O-ring 4x2 NBR70 | | | |
| E4 - 5,5 | 19332 | O-ring 5x2 NBR70 | Shrouds export | | |
| E4 – 6,35 | 19228 | O-ring 6x2 NBR 70 | 4,5 & 5,5 | 19129 | Shroud 247mm |
| E4 – 7,62 | 19225 | O-ring 7,5x2,0 NBR 70 | 6,35 & 7,62 | 19328 | Shroud 362,5mm .25-.30 |
| E5 | 19026 | Cylindrical pin 2,5m6x6 | | | |
| E6 | 19020 | Sidelever v7 | | | |
| E7 | 19037 | Side lever Handle v7 | | | |
| F1 | 19035 | Plugg 1/8" v7 | | | |
| F2 | 19329 | Inlet valve rod "gold" | | | |
| F3 | 5111 | O-ring 2,5x1,5 NBR 90 | | | |
| F4 | 19309 | Tube end mano 40mm | | | |
| F5 | 19195 | O-ring 28x3 NBR 90 | | | |
| F6 | 19196 | O-ring 30x2 NBR 70 | | | |
| F7 | 19196 | O-ring 30x2 NBR 70 | | | |
| F8 | 5005 | Plastic washer 2mm | | | |
| F9 | 11505 | Pressure gauge 25mm 1/8" | | | |
| F10 | 19344 | Dust cover | | | |
| F11 | 19382 | Delrin bushing dust cover | | | |
| F12 | 5105 | O-ring 9,3x2,4 NBR 90 | | | |
| F13 | 19335 | Tube end open | | | |
| F14 | 19195 | O-ring 28x3 NBR 90 | | | |
| F15 | 7018 | Valvepin AirTube Complete | | | |
| F16 | 2525 | Spring 0,6x4x15 | | | |
| F17 | 7044 | Valveseat complete | | | |
| F18 | 11013 | Valve pin Nut | | | |