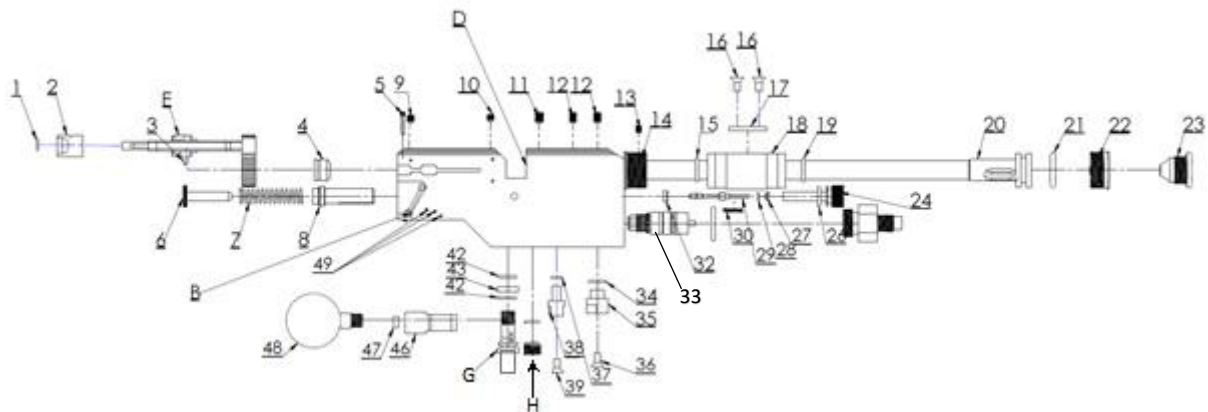
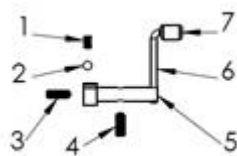


Model	Other model names	Date	Revision	Revision date
FX Indy		2020-06-01	EN.21.02	2021-05-12

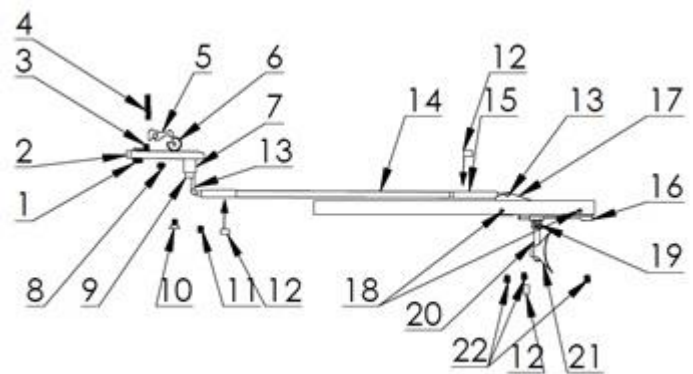
**A**



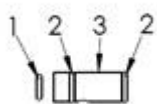
**B**



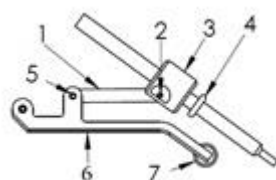
**C**



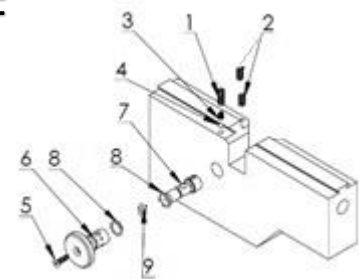
**D**



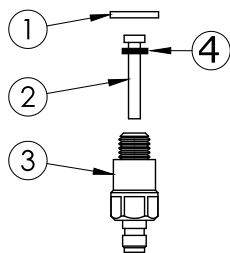
**E**



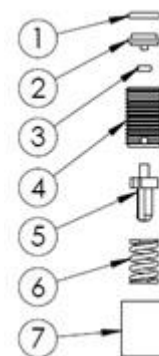
**F**



**G**



**H**



Model	Other model names	Date	Revision	Revision date
FX Indy		2020-06-01	EN.21.02	2021-05-12

NO	ART.NO	DESCRIPTION	NO	ART. NO	DESCRIPTION
-	19318	Cheek piece	A29	7015 > .22	Valve pin complete
-	19317	Scope mount rail	A29		
-	19321	Synthetic Stock	A29	7019 .30	Valve pin complete
-	16051	Recoil pad	A30	2525	Spring 0,6x4x15
-	19174	Complete pump unit	A32	7044 > .25	Valve seat complete
A1	5112	O-ring 5,28x1,78 NBR 70	A32	-	
A2	19029	Pellet probe guide, rear	A32	19217 .30	Valve seat complete
A3	11509	CPK 3h6x10	A33	-	See "Regulator pressure chart" schematic
A4 .177	19013	Black plastic bushing	A34	19327	O-ring 10,1x1,6 NBR70
A4 .22	19012	Black plastic bushing	A35	19302	Attachment 1/8" to M5
A4 .25	19101	Black plastic bushing	A36	5203	Countersunk screw M5x10
A4 .30	19211	Black plastic bushing	A37	5112	O-ring 5,28x1,78 NBR70
A5	19034	Grub screw M3 special	A38	19121	Stock attachment M6
A6	11541	Hammer spring adjuster HP	A39	5203	Countersunk screw M5x10
A6	11030	Hammer spring adjuster LP	A40		See H section
A7	11500	Hammer spring	A42	19327	O-ring 10,1x1,6 NBR70
A8 .22-.25	11540	Hammer weight	A43	19230	Washer seal guide
A8 .30	17003	Hammer weight	A44	N/A	N/A
A8	19039	Hammer	A45	19052	See G Section
A9	5203	Counter sunk screw M5x10	A46	19079	Banjo 1/8"
A10	2534	Grub screw M5x6 with tip	A47	5003	Plastic washer 4mm
A11	19086	Grub screw M6x8	A47.1	5010	Plastic washer 1mm
A11 .30	19224	Grub screw M8x8	A48	19347	Manometer
A12	2503	Grub screw M5x8	A49	19040	Cpk 2m6x24
A12 .30	19086	Grub screw M6x8	B1	11503	Spring 0,5x2,5x4,4
A13	11201	Grub screw M5x4	B2	11527	Steel ball 3,175
A14	19314	Shroud mount rear bullpup	B3	11633	Grub screw M2,5x8
A15	12045	O-ring 13,95x2,62 NBR70	B4	11508	Grub screw M3x8
A16	19025	Countersunk screw M5x8	B5	11027	Safety rod
A17	19014	Dovetail plate	B6	11625	Safety pin
A18	19316	Barrel support	B7	11200	Safety knob
A19	12045	O-ring 13,95x2,62 NBR70	C1	11062	Trigger adjuster
A20 > .22	19028	Shroud Compensator	C2	11524	Trigger base
A20 .25	19065	Shroud Compensator	C3	2500	Grub screw M3x6
A20 .30	19204	Shroud Compensator	C4	11504-2	Spring 0,4x2,5x15
A21	19098	O-ring 18,0x4,0 NBR70	C5	11031	Trigger sear
A22	18010	Muzzle thread insert	C6	11525	Trigger wheel
A23 .177	17023	Muzzle	C7	19315	Trigger block receiver side
A23 .22	17000	Muzzle	C8	16092	Grub screw M3x4
A23 .25	19112	Muzzle	C9	2532	Screw M3x12
A23 .30	19212	Muzzle	C10	13039	Countersunk screw M3x8
		<b>Shroud version 2</b>	C11	2500	Grub screw M3x6
1	5113	O-ring 20,24 x 2,62 NBR 70	C12	16100	Magnet 3x5mm
2 > .22	19122	Muzzle MkII	C13	19305	Ball pin
2 .25	19124	Muzzle MkII	C14	19312	Trigger extension rod M3
2 .30	19125	Muzzle MkII	C15	19307	Trigger adjustment m3
3	19128	Thread protection	C16	19167	Match trigger base
A24	19009	Guide M16	C17	19303	Trigger connection
A26	5105	O-ring 9,3x2,4 NBR90	C18	19040	CPK 2m6x24
A27	19038	Spring seat	C19	19178	Screw M2x4
A28	5111	O-ring 2,5x1,5 NBR90	C20	19137	Trigger pin

Model	Other model names	Date	Revision	Revision date
FX Indy		2020-06-01	EN.21.02	2021-05-12

C21	19136	Adjustable trigger blade	H5	19066	Piston for overpressure valve
C22	16092	Grub screw M3x4	H6	19072	Spring for overpressure valve
D1 .177	2529	O-ring 4,3x1,5 NBR70	H7	19067	Lid for overpressure valve
D1 .22	5108	O-ring 5,28x1,78 PUR70			
D1 .25	4526	O-ring 6,35x1,27 NBR70			
D1 .30	19209	O-ring 7,5x1,5 NBR70			
D2 > .25	5112	O-ring 5,28x1,78 NBR70			
D2 .30	19210	O-ring 11,0x1,5 NBR70			
D3 .177	2057	Barrel inlet			
D3 .22	2056	Barrel inlet			<b>Barrels</b>
D3 .25	19104	Barrel inlet	.177	12030	Barrel .177 14 – 485mm
D3 .30	19207	Barrel inlet	.22	12006	Barrel .22 14 – 485mm
E1	19021	Side lever linkage	.25	19106	Barrel .25 14 – 600mm
E2	19042	CPK 2m6x8	.30	19206	Barrel .30 14 – 600mm
E3 .177	19011	Pellet probe			
E3 .22	19010	Pellet probe			<b>Shrouds for Swedish market</b>
E3 .25	19192	Pellet probe	> .22	19099	345mm Shroud
E3 .30	19200	Pellet probe	.25 >	19142	449mm Shroud
E4 .177	19171	O-ring 4x2 NBR70			
E4 .22	19332	O-ring 5x2 NBR70			<b>Shrouds for export market</b>
E4 .25	19228	O-ring 6x2 NBR70	> .22	19129	247mm Shroud
E4 .30	19225	O-ring 7,5x2 NBR70	.25 >	193285	365mm Shroud
E5	19026	CPK 2,5M6x6			
E6	19020	Side lever			
E7	19037	Side lever handle			
F1	2502	Grub screw M4x12			
F1.1	19004-7R	Main Block Indy .177			
F1.1	19004-8R	Main Block Indy .22			
F1.1	19004-9R	Main Block Indy .25			
F1.1	19311-2R	Main Block Indy .30			
F2	12033	Grub screw M4x8 with flat tip			
F3	11501	Spring 0,5x2,5x6,1			
F4	4066	Steel ball 3mm			
F5	2508	Screw M3x10			
F6	16083	Power wheel			
F7	16082	Inner axel 4,5mm for power wheel			
F8	19108	O-ring 8x1 NBR90			
F9	19109	O-ring 4x1,5 NBR70			
G1	1511	Washer rubber/steel 1/8"			
G2	19329	Inlet valve rod - Gold			
G3	19322	Quick connector male - Indy			
G4	5107	O-ring 2,9x1,78 PUR 90			
H1	4528	O-ring 7,66 x 1,78 NBR 70			
H2	19069	Seat for overpressure valve			
H3	17036	O-ring 1,78x1,78 NBR 70			
H4	19068	Housing for overpressure valve			